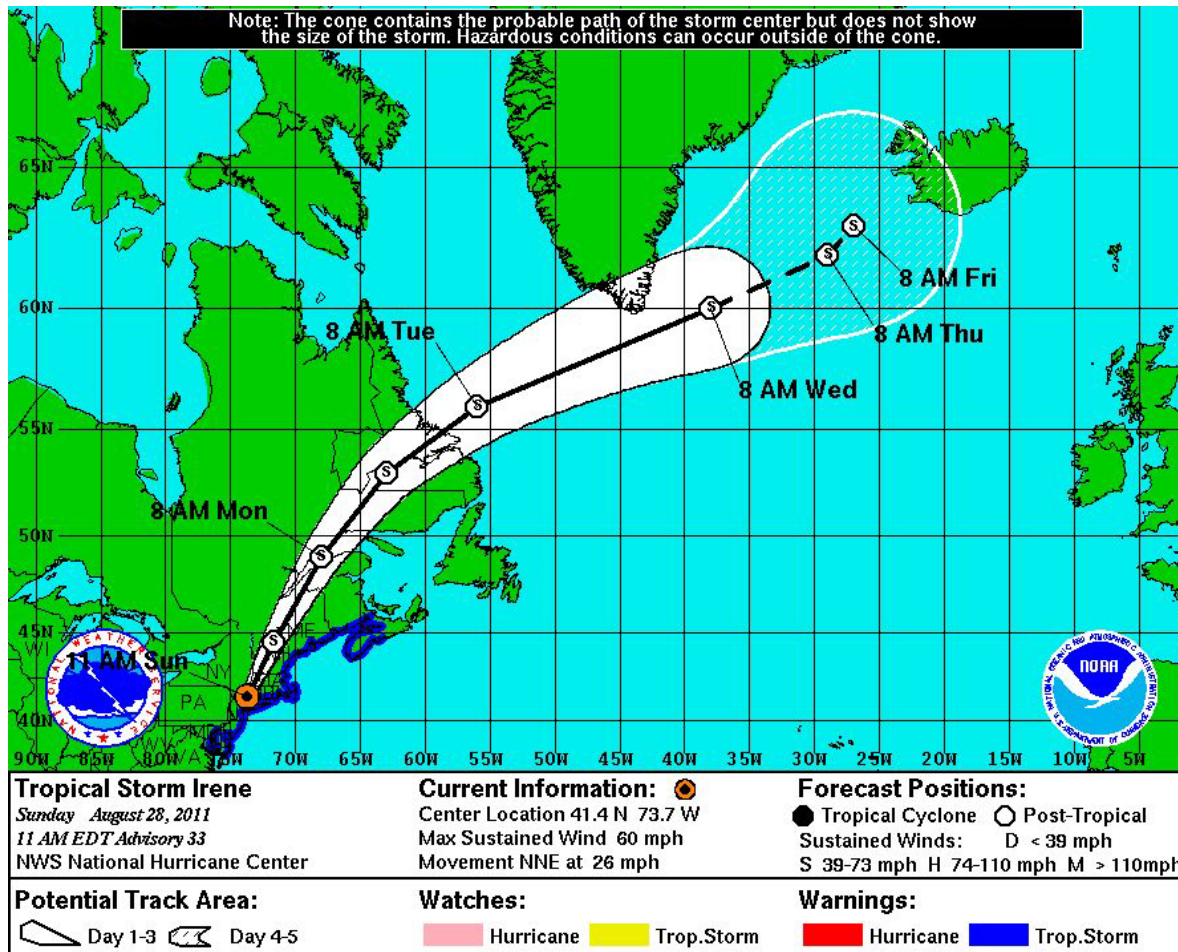


GMRR Bridge #114
Tropical Storm Irene Emergency Repairs
Chester, Vermont

ECI Rail Constructors, Inc.
September 2011

Tropical Storm Irene



NWS Bulletin for Irene

5:00 PM on August 28, 2011

- RAINFALL...IRENE IS EXPECTED TO PRODUCE TOTAL RAINFALL ACCUMULATIONS OF 4 TO 6 INCHES...WITH ISOLATED MAXIMUM AMOUNTS OF 8 INCHES... FROM NORTHEASTERN NEW YORK STATE NORTHEASTWARD THROUGH THE NORTHERN PORTION OF NEW ENGLAND. THESE RAINS...COMBINED WITH HEAVY RAINS OVER THE PAST FEW WEEKS...COULD CAUSE WIDESPREAD FLOODING AND LIFE-THREATENING FLASH FLOODS.

Initial ECI Site Visit Tuesday – August 31



Mobilization & Access Construction

Wed-Sat: Sept 1 to Sept 3



Mobilize Cranemasters Saturday – September 3



Setup Cranes

Saturday – September 3



Bridge Brought to Vertical & Secured Sunday – September 4



Stabilize West Abutment Monday - September 5



Install Pedestal at NW Bearing Tuesday – September 6



Secure Work from Tropical Storm Lee Wednesday – September 7



Test Borings at East Abutment Thursday – September 8



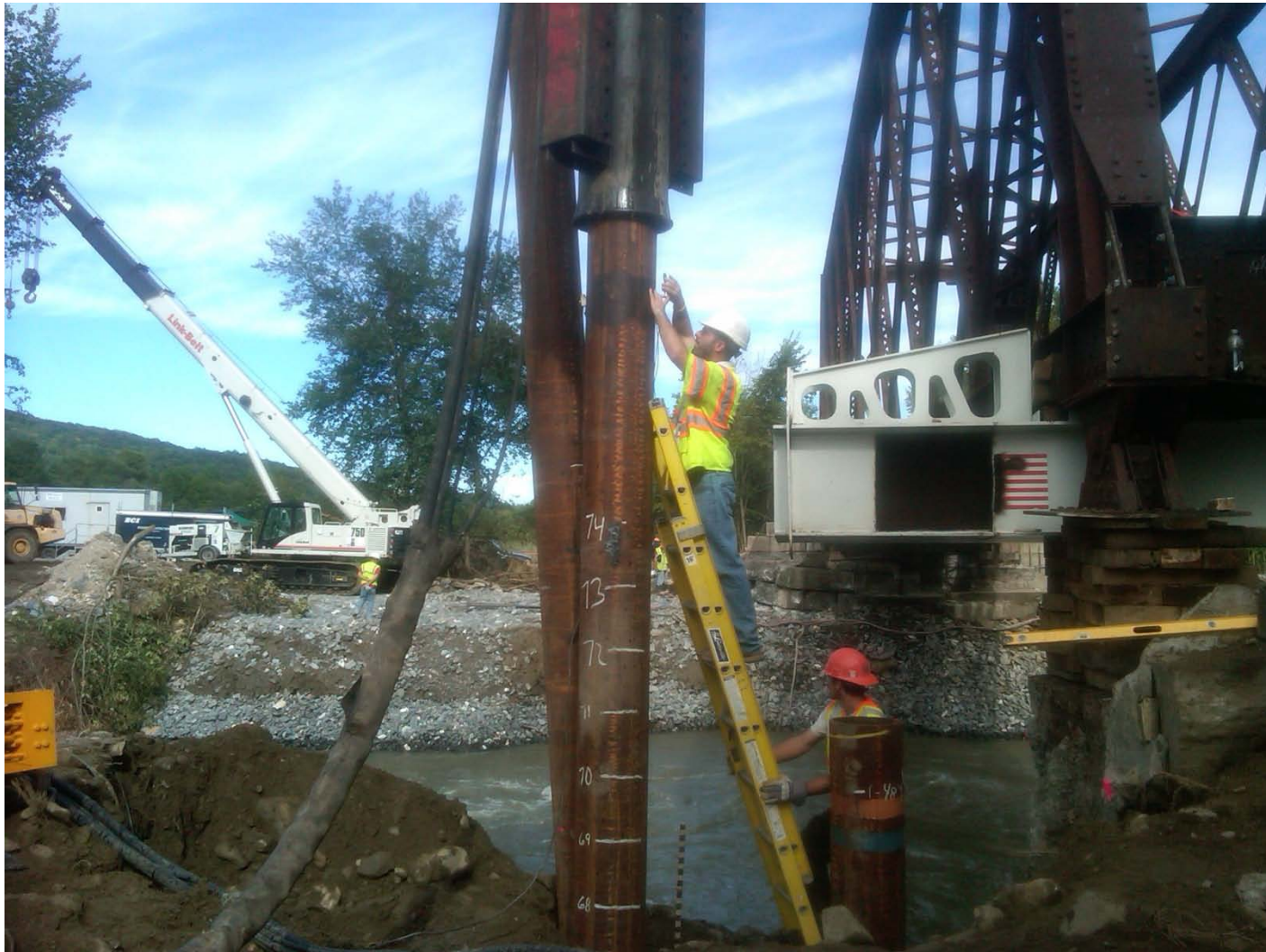
Start Driving Pipe Piles

Thursday – September 8



Testing & Driving Pipe Piles

Friday – September 9



13.75-in-OD x 0.707-inch wall Pipe Pile Splicing – 2 hrs/joint



Final Driving of Pipe Piles Saturday – September 10



Shotcreting of West Abutment Sunday – September 10



Sheet Pile Wall to Extend Damaged West Abut

Sunday - September 10



Temporary Bearing Pedestal Sunday - September 11



Setting Bridge on Temporary Bearing Supports

Sunday - September 11



Pouring Concrete Backwall & Abut Extension

Monday – September 11



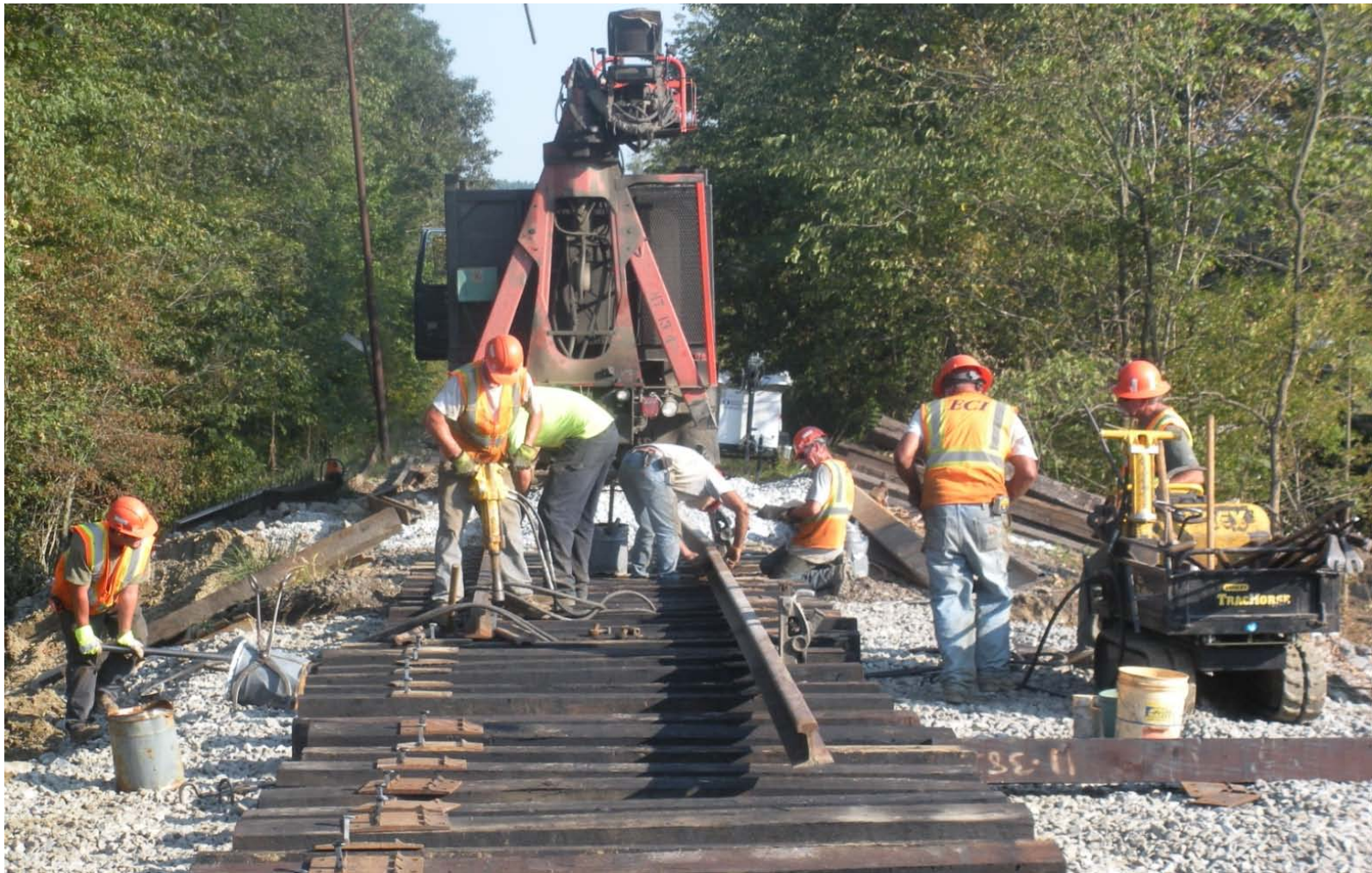
Final Welding & Bracing of Piles & Pedestal Tuesday – September 13



Rebuilding Approach Embankment Tuesday – September 13



West Approach Track Reconstruction Tuesday – September 13



Team Photo

Tuesday – September 13



First Train

Wednesday – September 14

